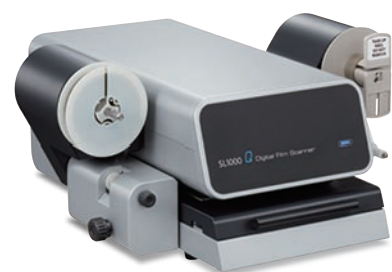
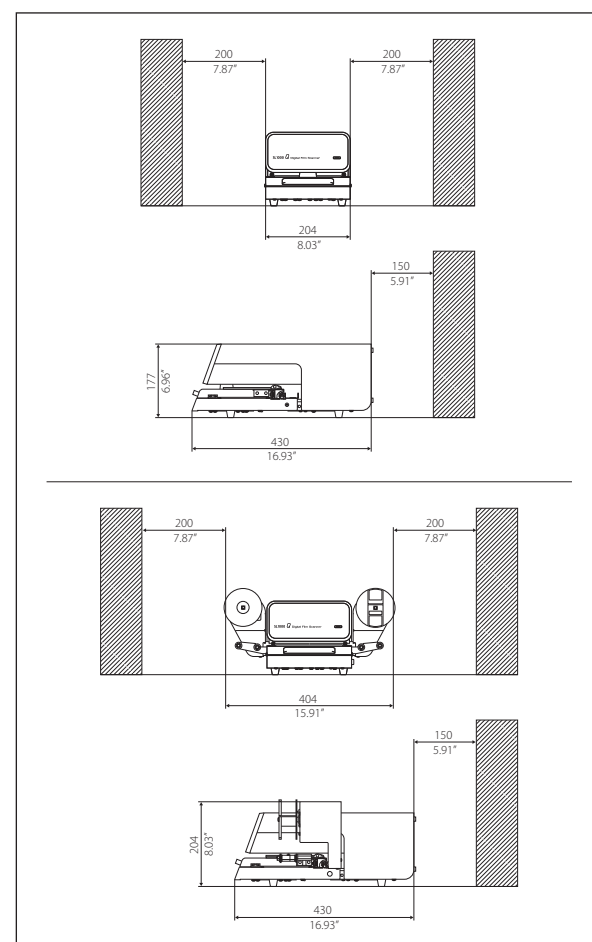


## Main Specifications

Lens Magnification	Optical Zoom: 6.8-54x Optical Zoom + Electrical Zoom: 6.8-105x
Scan Speed	Approx. 1 sec. * It is provided for at the processing performance that doesn't depend on the PC specifications.
Film Type	Colour Film / Monochrome Film, Negative Film / Positive Film •Micro Fiche Film •Jacket Film •Aperture Card •16/35 mm Roll Film •16 mm Cartridge Film (Type: A, M) •Micro Opaque The maximum reading size: 47×34 mm
Resolution	72/100/150/200/240/300/360/400/430/600/1200 dpi * 430 dpi and 600 dpi are available with Grey scale or B/W binary and selectable with the size of A4, Letter or less.
File Output Format	JPEG, JPEG 2000, TIFF (Compression / Non-compression / G4), PNG, BMP, PDF, TIFF multipage, PDF multipage
Interface	USB 3.0 Super Speed (The length of USB cable is 2 m or less.) USB 3.0 Standard-B connector * The standard port on the PC can be available.
OS compatibility	Windows 8.1 (64 bit) Windows 10 (64 bit)
Dimensions	SL1000 Q FC 203×436×177 mm / 12.5 kg
(W×D×H) /	SL1000 Q RFC 404×436×204 mm / 15 kg
Weight	SL1000 Q BS 404×436×204 mm / 15 kg
Power Source	AC100-240V 50 / 60Hz

## Dimensions



### SL1000 Q BS

Blip Search feature allows you to quickly and easily reach the required frame by getting the blip marks on 16mm roll film.



### SL1000 Q RFC

The motorized roll film carrier automates high speed and fully automated 16mm roll film at high speed and completely.



### SL1000 Q FC

Compact basic model specified for Micro-Fiche film. An optional manual roll film carrier can be used.

#### Please note

- Copying paper currency, currency, government-issued securities, unused postage stamps, postcards, government-issued stamps, etc., circulating in Japan is prohibited by law.
- Use copyrighted works such as books, music, paintings, prints, maps, movies, drawings, photographs, etc. personally or at home or within a limited range according to this. Is forbidden except for copying.

#### For safe use

- Please read the instruction manual carefully before use and use it correctly.
- Use the correct power supply and voltage indicated.
- Securely connect the ground. In the event of a fault or short circuit, you should get an electric shock.
- Do not install the product in a location with lots of moisture, steam, dust, oily smoke, etc. Doing so might cause fire, electric shock, or a fault.

- \* The brand names and product names are registered trademarks or trademarks of the respective companies.
- \* Product specifications, appearance, and prices are subject to change without notice for convenience.
- \* The colour tone of the products on this page may be different from the actual product due to printing.
- \* Consumption tax is not included in the prices listed on this paper, so please pay separately when purchasing.
- \* Consumables and other related products are not included in the main unit price.
- \* The products listed in this catalog cannot be used overseas due to domestic specifications.

Manufacturer  
Kyokko seiko Co., Ltd.

Digital film scanner

# SL1000 Q

Reads microfilm with high image quality,  
Operate lightly with a dedicated application.



High-speed, silent,  
lightweight and  
compact design with  
a zoom lens.

6.8-54x  
long zoom

USB3.0  
(5Gbps)

Blip  
Function

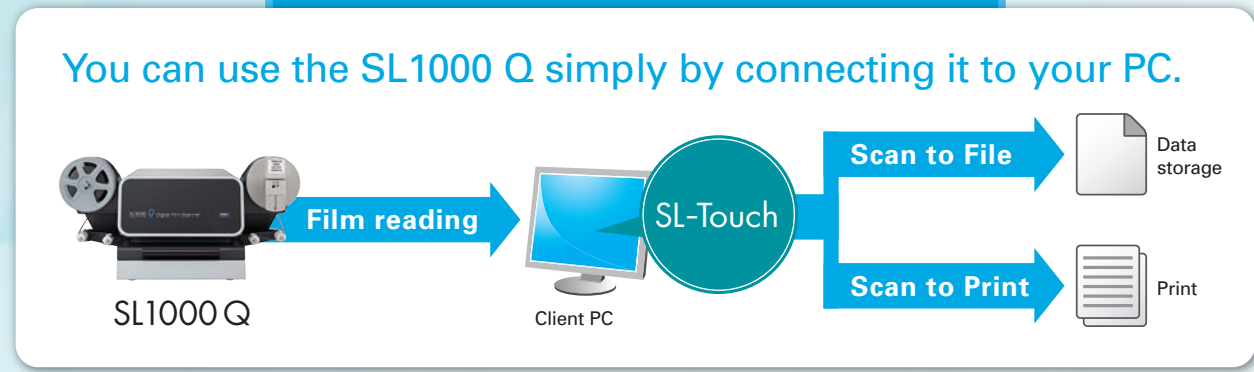
20.16 million  
pixel  
area sensor



# High performance and space saving

Slowly watch and digitize with excellent operability. Comfortable operation with one fingertip

Supports the operation and management of information assets recorded in microfilm.



# SL1000 Q SL-Touch

## Digital film scanners that combine reproducibility and responsiveness

### Lightweight and compact design that can be installed anywhere

177mm height x 204mm width x 430mm depth, and it can be installed on a desktop with a PC. It weighs only 12.6 kg and is easy to carry, increasing the degree of freedom of installation.

### Compatible with various types of film

Compatible with fiche film, jacket film, aperture cards and micro opaque as standard. Compatible with roll-film and cartridge film when using the Motorised Roll-Film Carrier option.

### Enhanced new function

- 72dpi, JPEG 2000 compatible

Customise the output resolution and file format.

**File Output Format**

- JPEG •JPEG 2000 •TIFF •BMP •PNG •PDF
- TIFF multipage •PDF multipage

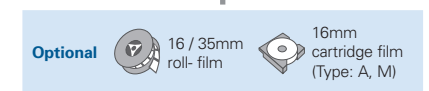
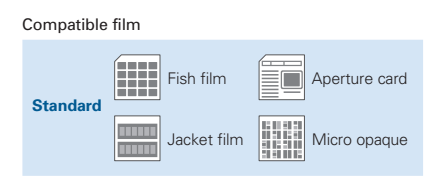
**Output Resolution**

72/100/150/200/240/300/360/400/430/600/1200 dpi

- Supports DB settings during installation

### Uses 6.8x to 54x super high magnification zoom

Newly designed optical zoom lens, fast focusing with very quiet operation and a wide zoom range of 6.8 - 54x.



\* Cartridge film Type: M can be used when an electric roll film carrier is installed.

### PDF text search, OCR (optical character recognition) processing

Scans saved in PDF format can use the OCR function to convert them into word searchable PDF format.

### Digitize colour microfilm images

By adopting a colour CCD, colour microfilm can be digitized in colour without conversion to monochrome.

### USB 3.0

USB 3.0 for high speed data transfer.

### Blip search function (SL1000 Q BS)

It is equipped with a level 1 BLIP search function, enabling high-speed automatic search with simple operations.

## Touch panel display compatible, dedicated application



### Improved workability with easy-to-use interface

The screen layout is easy to use and easy to see. You can switch between the most suitable film image (scan mode) and saved image file (view mode) with one touch, making comparison and editing easy.

### Intuitive operation with touch panel support

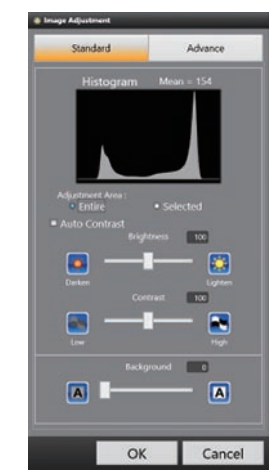
When used with a touch panel display, you can operate it while directly touching the screen with your finger, similar to a smartphone. Intuitive operation according to the movement of your fingertips, realized on smartphones.



\* In order to enlarge the displayed image using the zoom operation of the touch panel, it is necessary to use a display that supports multi-touch.  
\* If the display does not support the Texas function, it can be operated using a mouse or keyboard.

### Equipped with scanned image correction and image quality adjustment functions

In addition to automatic tilt correction, density correction and focus adjustment, editing by manual operation such as trimming, brightness and contrast adjustment is also possible. You can check in view mode.



\* Correction and image quality adjustment function in view mode